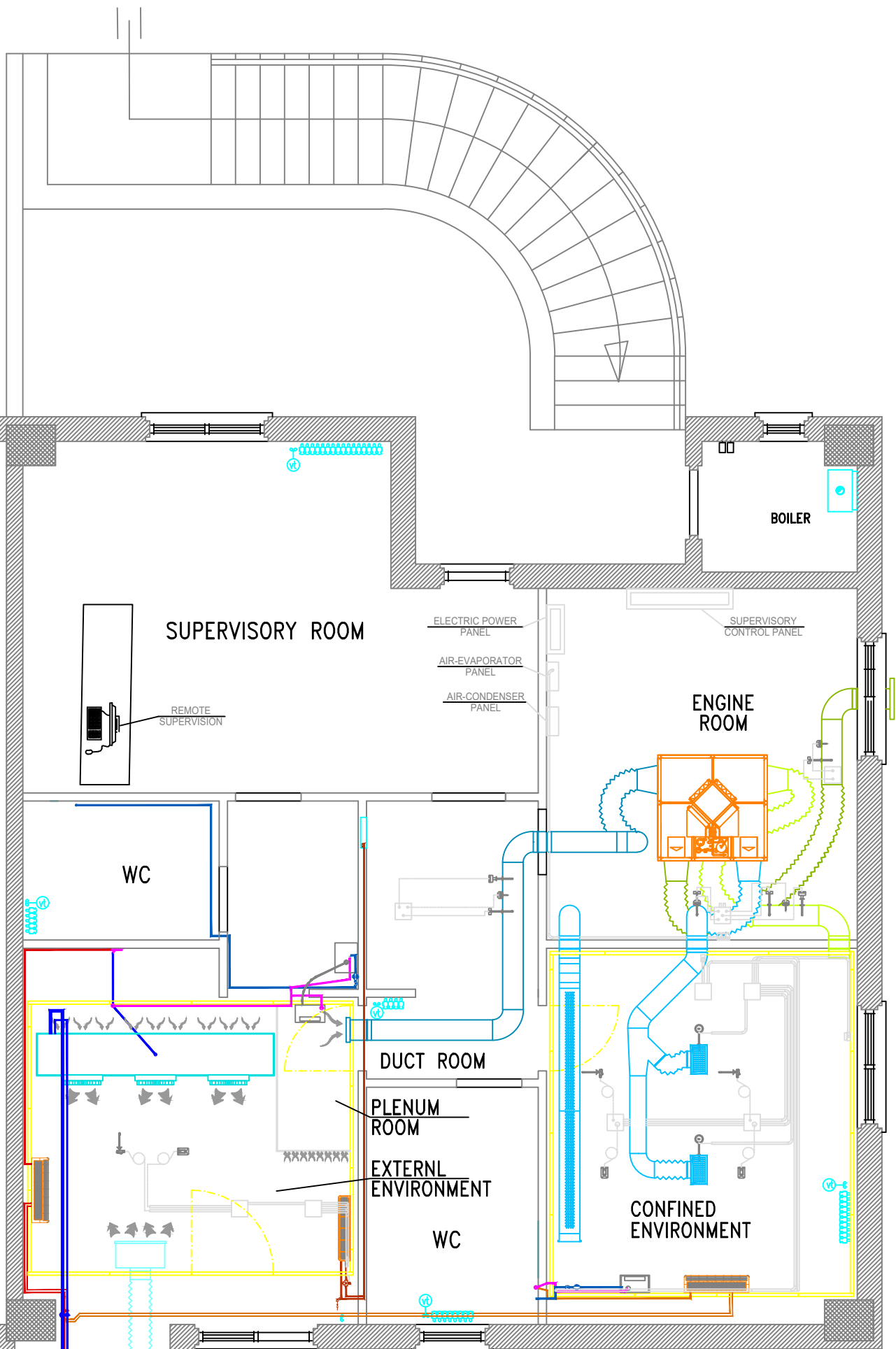


ATTACHMENT 1



LEGEND & SIMBOLS	
	INSULATING PANEL
	PERFORATED SUPPLY AIR DUCT
	FLEXIBLE EXHAUST AIR DUCT
	EXHAUST AIR DUCT
	FLEXIBLE DISCHARGE AIR DUCT
	FLEXIBLE SUCTION AIR DUCT
	SUPPLY AIR DUCT
	FLEXIBLE SUPPLY AIR DUCT
	SUCTION EXTERNAL AIR DUCT
	SUPPLY GRILLE
	TEMPERATURE-RELATIVE HUM. COMBINED PROBE
	AIR SPEED PROBE
	DIFFERENTIAL PRESSURE PROBE
	DIFFERENTIAL PRESSURE PROBE
	CARBON DIOXIDE PROBE
	TEMPERATURE-RELATIVE HUM. COMBINED PROBE
	EXTERNAL AIR SUCTION PLENUM
	THREE-WAY MIXING SOLENOID VALVE
	WATER DISCHARGE VALVE
	FILTER AND SHUT-OFF VALVE



gas	liq.	cond.	COMPONENT: PIPE SIZES
•	•	•	Air-evaporator: $\phi 1\ 5/8'' - \phi 5/8'' - \phi 1\ 1/4''$
•	•	•	Air-condenser: $\phi 1\ 1/4'' - \phi 7/8'' - \phi 1\ 1/4''$
•	•	•	HP E.E.: $\phi 1/2'' - \phi 1/4'' - DN\ 16/18$
•	•	•	hp C.e.: $\phi 3/8'' - \phi 1/4'' - DN\ 16/18$
Delivery	Return		COMPONENT: PIPE SIZES
•	•		fan-coil: insulated copper DN16 - DN16
Supply	Disch.		COMPONENT: PIPE SIZES
•			water: multilayer pipe DN20
	•		water discharge: PVC pipe DN20
	•		water discharge: PVC pipe DN40

	AIR-EVAPORATOR
	AIR-CONDENSER
	WALL SPLIT INDOOR UNIT
	HEAT PUMP EXTERNAL UNIT
	FAN-COIL
	SIVeMeC
	IMMERSED ELECTRODES HUMIDIFIER
	HUMIDIFIER TERMINAL UNIT